



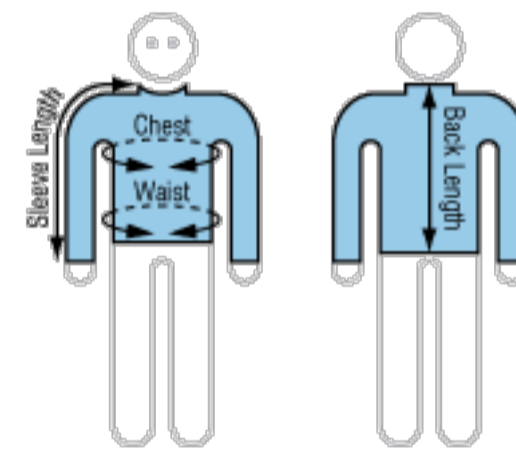
PRODUCT TECHNICAL DATA

Sailing Gear - Sizing Information Guide

Adult Range		XXS	XS	S	M	L	XL	XXL	XXXL
Height*	cm	163 - 168	167 - 172	171 - 176	175 - 180	179 - 184	183 - 188	187 - 192	192+
	ft./in.	5'4" - 5'6"	5'6" - 5'8"	5'7" - 5'9"	5'9" - 5'11"	5'10" - 6'0"	6'0" - 6'2"	6'2" - 6'4"	6'4"+
Chest*	cm	86 - 91	90 - 95	94 - 99	98 - 103	102 - 107	106 - 111	110 - 115	115 - 120
	in.	33 - 35	35 - 37	37 - 39	39 - 41	40 - 42	42 - 44	43 - 45	45 - 47
Waist*	cm	63 - 69	67 - 73	71 - 77	75 - 81	79 - 86	83 - 90	87 - 94	91 - 98
	in.	25 - 27	26 - 29	28 - 30	30 - 32	31 - 34	33 - 35	34 - 37	36 - 38
Leg Length (CL25, CL27)	cm	67	69	71	73	75	77	79	n/a
	in.	26	27	28	29	30	30	31	n/a
Sleeve Length (CL20, CL21, CL22, CL24)	cm	66	68	69	71	72	74	75	n/a
	in.	26	27	27	28	28	29	30	n/a
Chest (CL80)	cm	106	112	118	124	130	136	142	146
	in.	30	31	32	33	34	35	35	36
Length (CL80)	cm	64	68	70	72	74	76	78	80
	in.	25	27	28	28	29	30	30	31
Sleeve length (CL80)	cm	76	79	82	84	86	88	90	91
	in.	30	31	32	33	34	35	35	36



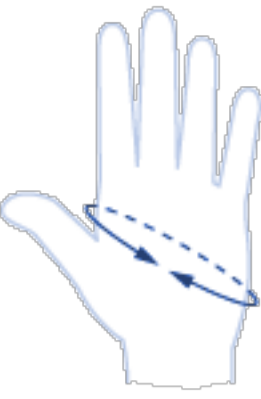
Junior Range		Size 08	Size 10	Size 12
Height*	cm	127 - 134	135 - 144	146 - 155
	ft./in.	4'2" - 4'5"	4'5" - 4'9"	4'9" - 5'1"
Chest*	cm	67 - 71	71 - 75	75 - 79
	in.	26 - 28	28 - 30	30 - 31
Waist*	cm	59 - 64	62 - 67	65 - 70
	in.	23 - 25	24 - 26	25 - 28
Sleeve Length (CL21J)	cm	56	58	61
	in.	22	23	24
Chest (CL80)	cm	88	94	100
	in.	35	37	39
Length (CL80)	cm	53	58	62
	in.	21	23	24
Sleeve length (CL80)	cm	61	66	71
	in.	24	26	28



SAILING GEAR LAYERING OPTIONS	Feature	Cold Wet Windy		Cold Dry Light/No Wind		Warm Wet Windy		Hot Wet Windy	Very Hot
		3	2	2	2	1	2	1	
NUMBER OF LAYERS		3	2	2	2	1	2	1	
CL21 Thermal Top	Warm when dry	▪	▪	▪					
CL24 Neoprene Skin Top	Warm when dry	▪		▪		▪			
CL20 & CL22 Rash Top	Maximum sun protection					▪	▪	▪	
CL80 Smock Top	Waterproof and windproof barrier	▪	▪		▪		▪		

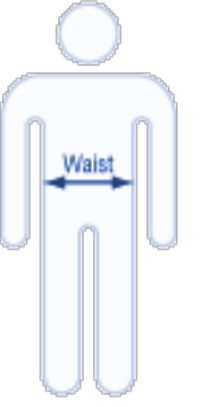
Glove Size

		XXXXXS	XXXS	XXS	XS	S	M	L	XL	XXL
Fullest Point of Hand*	cm	18	19	20	21	22	23	24	25.5	26.5
	in.	7	7 1/2	7 7/8	8 1/4	8 5/8	9	9 1/2	10	10 3/8



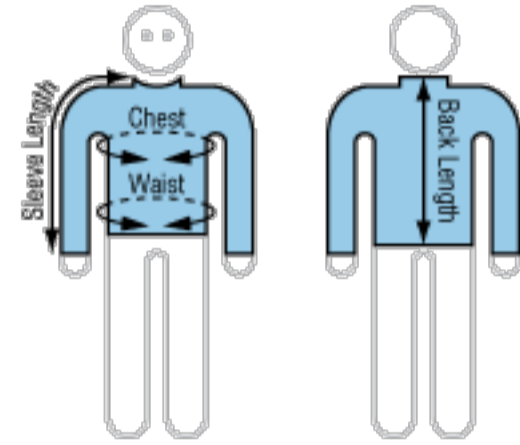
Trapeze Harnesses

		S	M	L	XL	XXL
Suits Waist*	cm	<76	76-81	81-86	86-92	>92
	in.	<30	30-32	32-34	34-36	>36



CL180 - Softshell Jacket

Adult Range		XS	S	M	L	XL	XXL
Back Length*	cm	66	68.5	70.5	73	75	79.5
	in.	26	27	28	29	30	31
Chest*	cm	107	112	117	122	127	132
	in.	42	44	46	48	50	52
Waist*	cm	95	101	107	113	118	122
	in.	37	40	42	44	46	48
Sleeve Length	cm	74	76	79	82	85	87
	in.	29	30	31	32	33	34



Footwear		XXXS	XXS	XS	S	M	L	XL	XXL
Footlength	cm	21 - 22	22.5 - 23.5	23.5 - 24.5	24.5 - 25.5	25.5 - 26.5	26.5 - 27.5	27.5 - 28.5	28.5 - 29.5
	ft./in.	8 1/4 - 8 5/8	8 7/8 - 9 1/4	9 1/4 - 9 5/8	9 5/8 - 10	10 - 10 3/8	10 3/8 - 10 3/4	10 3/4 - 11 1/4	11 1/4 - 11 5/8

Typical Equivalent Country Sizing**

Europe		33 - 34	35 - 36	36 - 38	38 - 40	40 - 43	43 - 44	44 - 46 1/2	46 1/2 - 48 1/2
U.S. & Canada	M	3	3 1/2 - 4 1/2	4 1/2 - 6	6 - 7 1/2	7 1/2 - 9	9 - 10 1/2	10 1/2 - 12 1/2	12 1/2 - 14
	W	3	5 - 6	6 - 7 1/2	7 1/2 - 9	9 - 10 1/2	10 1/2 - 12	12 - 14	14 - 15 1/2
U.K.	M	2	3 - 4	4 - 5 1/2	5 1/2 - 7	7 - 8 1/2	8 1/2 - 10	10 - 12	12 - 13 1/2
	W	2	2 1/2 - 3 1/2	3 1/2 - 5	5 - 6 1/2	6 1/2 - 8	8 - 9 1/2	9 1/2 - 11 1/2	11 1/2 - 13
Australia.	M	2	3 - 4	4 - 5 1/2	5 1/2 - 7	7 - 8 1/2	8 1/2 - 10	10 - 12	12 - 13 1/2
	W	2	3 1/2 - 4 1/2	4 1/2 - 6	6 - 7 1/2	7 1/2 - 9	9 - 10 1/2	10 1/2 - 12 1/2	12 1/2 - 14
Japan	M	21	21 1/2 - 22 1/2	22 1/2 - 24	24 - 25 1/2	25 1/2 - 27 1/2	27 1/2 - 28 1/2	28 1/2 - 30 1/2	30 1/2 - 31 1/2
	W	21	21 - 22	22 - 23 1/2	23 1/2 - 25	25 - 27	27 - 28	28 - 30	30 - 31

*Sizes are based on person not garment.

**Country sizes are indicative only and subject to variation. Your 'foot length' measurement should be used as the most accurate guide for sizing.

***These figures indicative for the full circumference in cm.

